



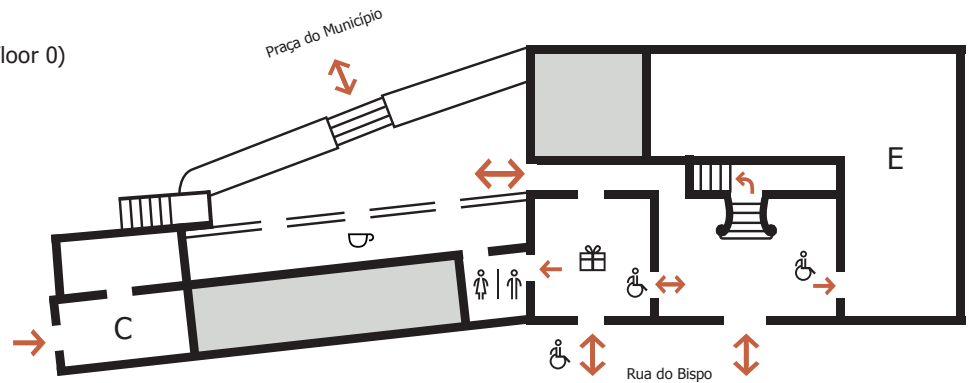


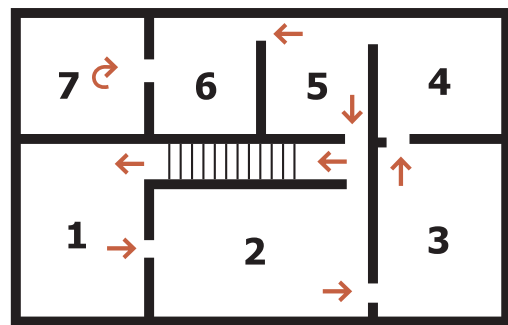
FLOOR 0

-  Access ramps (only on floor 0)
-  Ticket Office / Store
-  Restrooms
- E** Temporary Exhibitions
-  Museu Café
- C** Chapel of Saint Louis of Toulouse



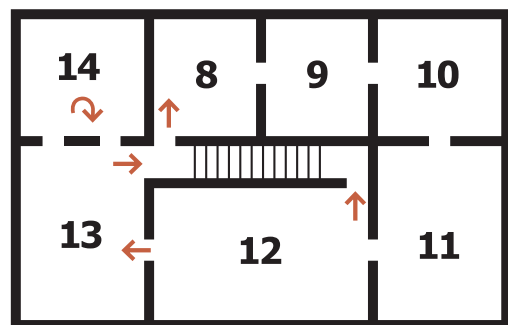
FLOOR 1

- 1** Portuguese and Flemish Sacred Gold and Silver Collection, 15th - 17th centuries
- 2** Sacred Gold and Silver, Sculpture and Religious Furniture, 17th - 19th centuries
- 3** The Cathedral's Altar of Repose, 17th century
- 4 - 5** Portuguese Painting, Sculpture and Religious Vestments, 16th - 17th centuries
- 6** "Encounter of Cultures" – Portuguese, Indo-Portuguese and Oriental Painting and Sculpture, 16th - 17th centuries
- 7** Portuguese Sculpture, 18th century



FLOOR 2

- 8 - 13** Flemish Painting and Sculpture, 15th - 16th centuries
- 14** Portuguese Painting, 16th - 17th centuries (large-scale paintings)



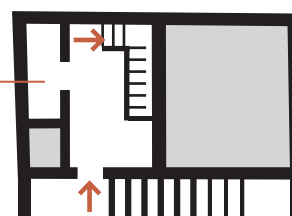
FLOOR 3

-  Restrooms

FLOOR 4

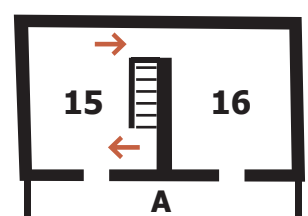
- 15 - 16** "Icons: Tradition and Diversity in the Legacy of D. Teodoro de Faria"

- A** Tiled panel



FLOOR 3

FLOOR 4





Access

O acesso ao museu pode ser feito pela Rua do Bispo ou pelo Largo do Município. A aquisição do Access to the museum is on Rua do Bispo or Largo do Município. Tickets on sale at the reception desk, located next to the entrance hall on the ground floor of the building.

Access to the Belvedere Tower viewpoint is through the museum and it's included in the ticket. The museum does not have an elevator. The staircase provides access to the upper floors. There are, however, access ramps on the ground floor: ticket office/shop and temporary showroom, and folding portable benches (located on the 1st floor) that also serve as a "crutch" when closed.



Restrooms

Ground floor (ticket office/shop) and 3rd floor (tower).



Cloakroom

Storage area for your large objects.



Accessibility

The Museum reception area has printed material in Braille (Portuguese, French and English) and embossed images for the blind. The signage of each floor along the route is embossed. There is also large print documentation available for partially-sighted persons.



Shop

The reception area also houses the Museum Shop where you can purchase catalogues, books and a variety of products inspired by the museum collection.



Coffee shop

The museum's cafeteria operates as a concession and can also be accessed from the Praça do Município.

Museum Coffee and Snacks: <https://www.facebook.com/museucaferestaurant/>